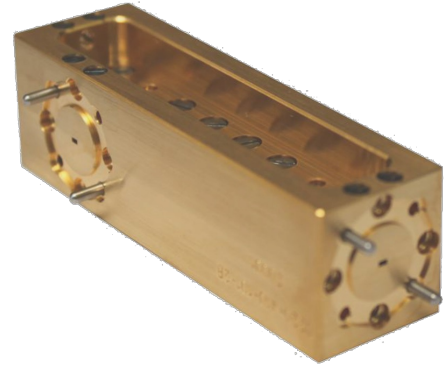




**WSC 260-400**  
**Waveguide Single Coupler 400 GHz**  
Part-No.: 04100016



**Technical Specifications**

Frequency Range [GHz]	260 - 400
RF Port	WR2.8 (UG387/UM)
Coupling Factor [dB]	15
Insertion Loss [dB (typ.)]	2
Ports	Port 1: Input Port Port 2: Output Port Port 3: Coupled Port
Directivity [dB (typ.)]	>30

**Typical Performance**