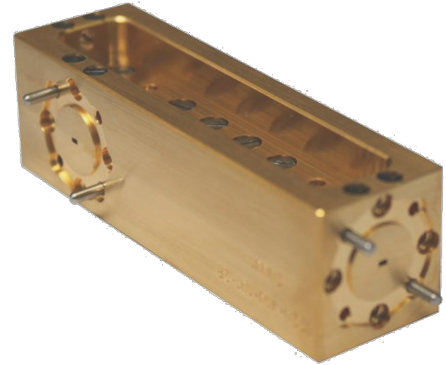




**WSC 170-260**  
**Waveguide Single Coupler 260 GHz**  
Part-No.: 04100015



**Technical Specifications**

Frequency Range [GHz]	170 - 260
RF Port	WR4.3 (UG387/UM)
Coupling Factor [dB]	15, 20
Insertion Loss [dB (typ.)]	2
Ports	Port 1: Input Port Port 2: Output Port Port 3: Coupled Port
Directivity [dB (typ.)]	>30

**Typical Performance**