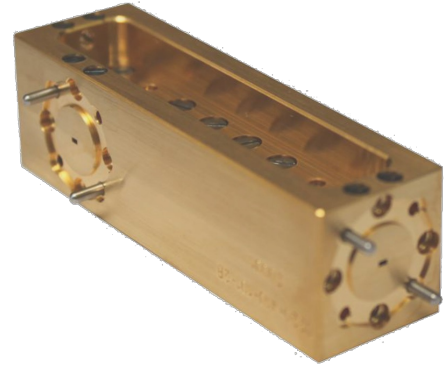




WSC 325-500
Waveguide Single Coupler 500 GHz
Part-No.: 04100008



Technical Specifications	
Frequency Range [GHz]	325 - 500
RF Port	WR2.2 (UG387/UM)
Coupling Factor [dB]	10, 20
Insertion Loss [dB (typ.)]	2.5
Ports	Port 1: Input Port Port 2: Output Port Port 3: Coupled Port
Directivity [dB (typ.)]	>30

Typical Performance

